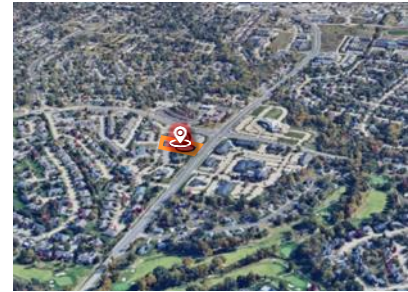


FOR LEASE

OFFICE SPACE

1010 CLUB VILLAGE DR STE 200
COLUMBIA, MO 65203



CLUB VILLAGE

OFFICE SPACE AVAILABLE

LOCATION: 1010 Club Village Dr Ste 200, Columbia, MO 65203

SUITE SIZE: 1,825 SF

SUITE FLOOR: 2nd Floor

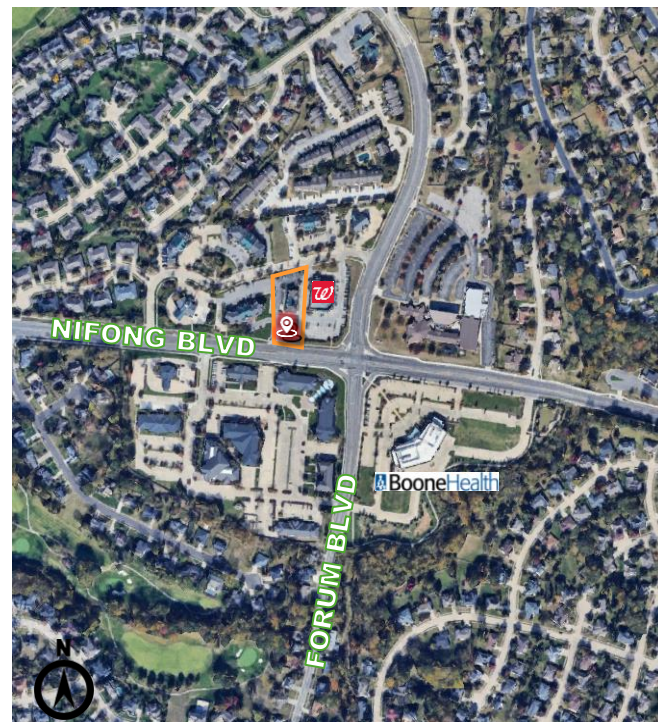
ZONING: Office

PROPERTY HIGHLIGHTS:

- **Located** in Columbia's preferred office, medical, and retail hub. Within walking distance to healthcare, banks, retail, restaurants, and Walgreens with the available office space directly above Belly Market & Rotisserie.
- **Excellent Visibility** from Nifong Blvd & Forum Blvd.
- **Convenient Access** to Providence Rd, Stadium Blvd, & Scott Blvd.
- **Adjacent To:** Walgreens, Belly, & D. Rowe's.

LEASE RATE: \$2,281.25/month

LEASE TYPE: Gross



573.875.5151

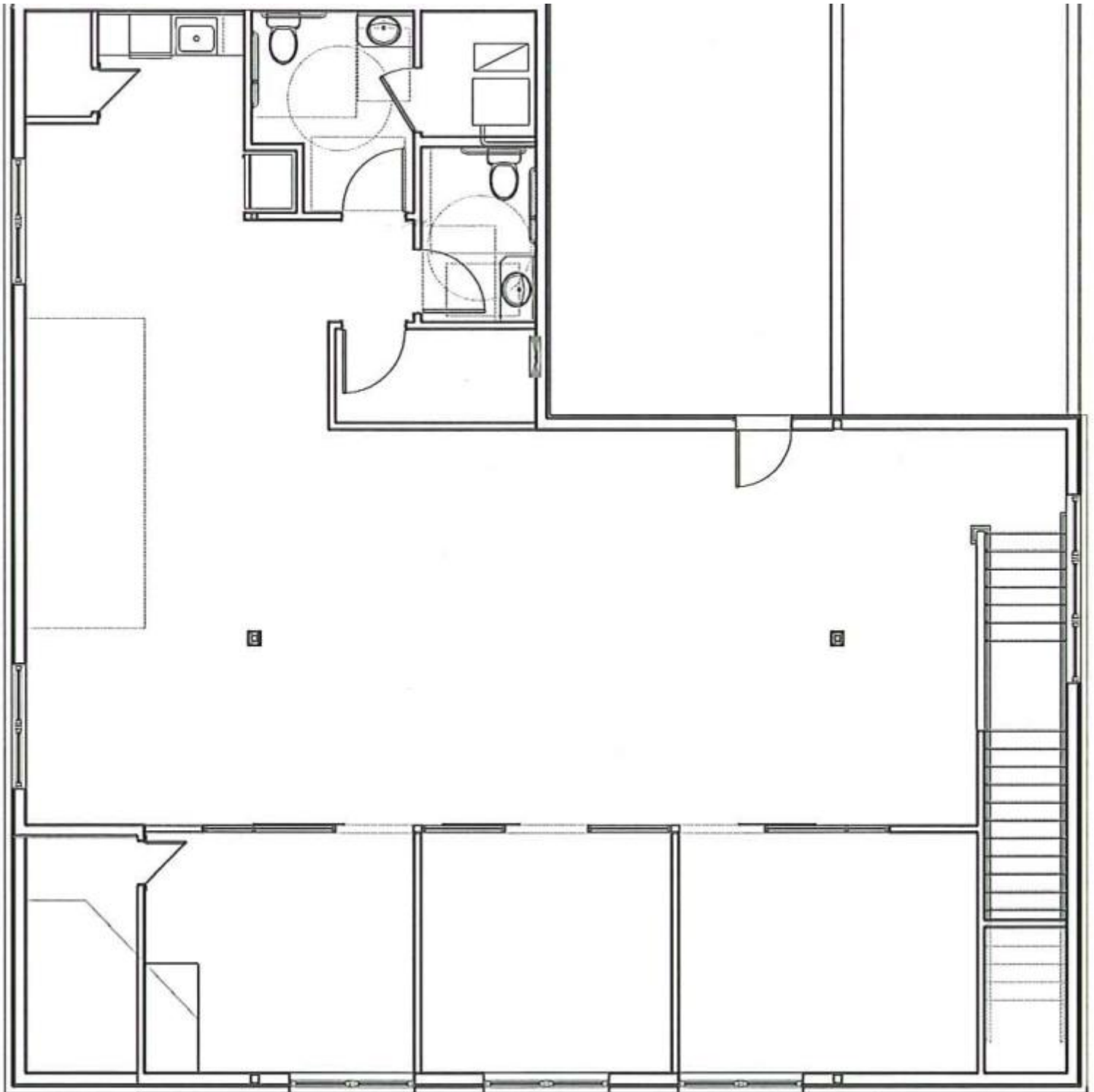
broker@silvertreeco.com

www.silvertreerealtyco.com



SilverTree
REALTY

FLOOR PLAN



1010 CLUB VILLAGE DR STE 200
COLUMBIA, MO 65203

573.875.5151

broker@silvertreeco.com

www.silvertreerealtyco.com



SilverTree
REALTY