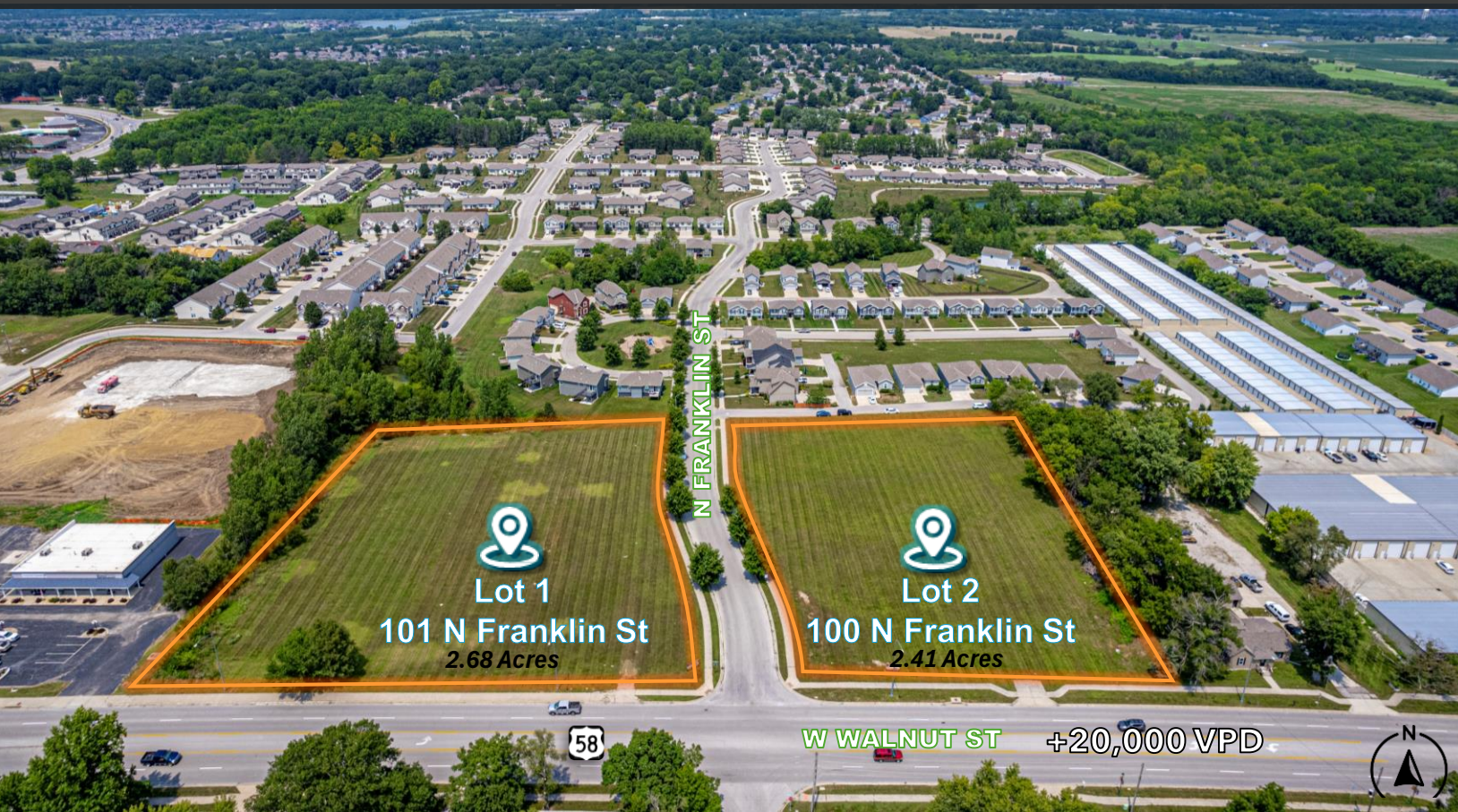


RAMBLEWOOD COMMERCIAL- LOT 2

100 N FRANKLIN ST
RAYMORE, MO 64083



RAMBLEWOOD COMMERCIAL

COMMERCIAL | RETAIL | OFFICE

LOCATION: [Lot 2] 100 N Franklin St, Raymore, MO 64083

SITE SIZE: 2.41 ACRES

ZONING: Commercial [Retail, Office, Commercial Flex]

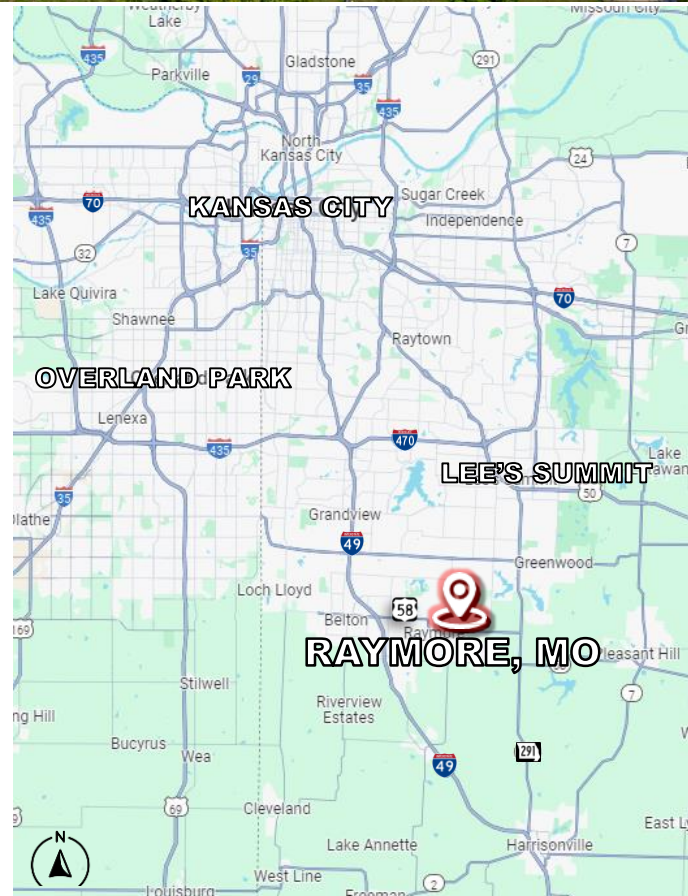
PROPERTY HIGHLIGHTS:

- Located within the Kansas City Metropolitan Area.
- Visibility: HWY 58 / West Walnut Street frontage lots with excellent visibility.
- Vertical Ready Land. All Utilities to site.
- Convenient Access to: Hwy 58, I-49, Hwy 291, & I-470.
- Primary Thoroughfare Entrance: To +350 Homes within one of the fastest growing cities in Missouri.
- Adjacent To: American Self Storage, Edward Jones, Heart & Soul Church, & Fellowship Church Campus.

SALE PRICE: \$840,000.00

LEASE RATE: Negotiable.

LEASE TERMS: Negotiable.



573.875.5151

broker@silvertreeco.com

www.silvertreerealtyco.com



SilverTree
REALTY

PROPERTY PHOTOS



LOT 2
100 N Franklin St, Raymore, MO 64083
2.41 AC