

STONE CREEK FALLS

LOT 3B STONE CREEK DR
REPUBLIC, MO 65619



STONE CREEK FALLS

COMMERCIAL | RETAIL | OFFICE

LOCATION: Lot 3B Stone Creek Dr, Republic, MO 65619

SITE SIZE: 1.2 ACRES

ZONING: Commercial [Retail, Office, Commercial Flex]

PROPERTY HIGHLIGHTS:

- Located at the signalized intersection of N Stone Creek Drive & Hwy 60, directly between River Region Credit Union (under construction) & Break Time C-Store (under construction).
- Visibility: HWY 60 & STATE HWY MM Realignment Frontage.
- Shovel-ready site with all utilities in place, completed access approaches, transition areas, and vertical construction-ready with ingress/egress fully developed (Pad Ready Site).
- Convenient Access to: Hwy 60, Hwy MM, & I-44.
- Adjacent to the Property: +1,000 multi-family units and MODOT's expansion of Hwy MM from the site north to I-44, together with Huey Magoo's, River Region Credit Union, and Break Time C-Store. Along with the New Republic Middle School and the City's Mega Sports Mega-plex set to begin construction.
- Additional Highlights: Within a mile of major employers such as Amazon, Red Monkey, Roi, and McLane Foods. Rapidly growing area with +100Mn in development projects underway.

SALE PRICE: \$800,000.00

LEASE RATE: Negotiable.

LEASE TERMS: Negotiable.



573.875.5151

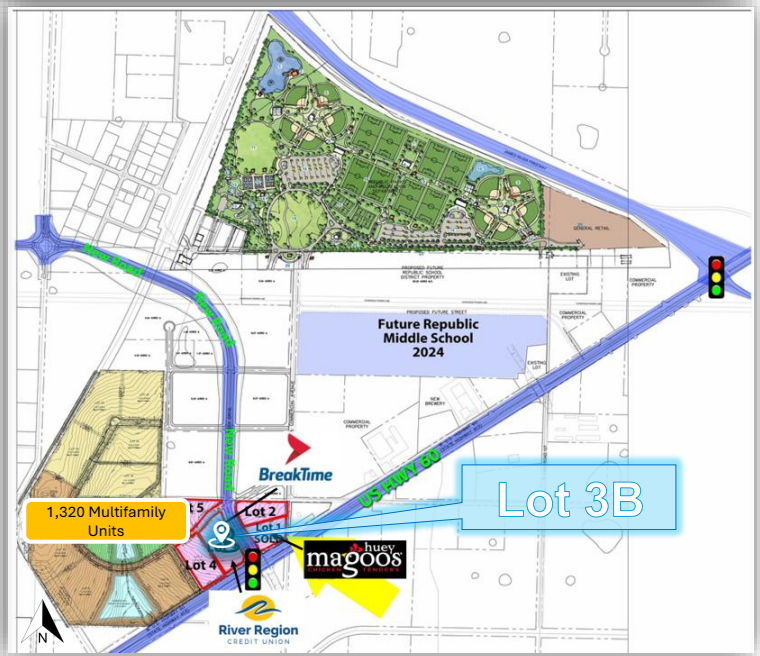
broker@silvertreeco.com

www.silvertreerealtyco.com



SilverTree
REALTY

PROPERTY DETAILS



LOT 3B STONE CREEK DR, REPUBLIC, MO 65619
1.2 AC

573.875.5151

broker@silvertreeco.com

www.silvertreerealtyco.com



SilverTree
REALTY