

**Available**

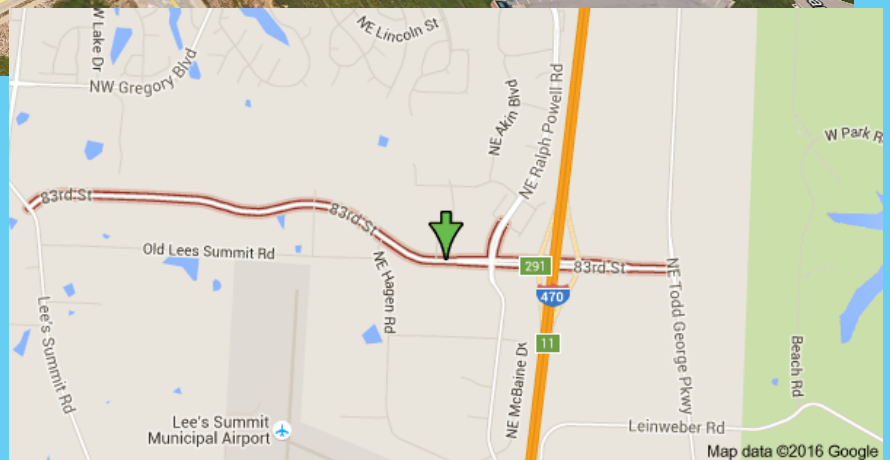
**Lot C9—Strother Crossing, Lee's Summit, MO 64064**

**1.81 Acres**



## Strother Crossing

- **\$1,024,966.00**
- 1.81 acres for sale
- Zoned: CP-2, Commercial/Retail/Office
- Pad Ready—All Utilities to Site
- **Newly Constructed** Signalized Intersection at Strother Road & NE Independence Ave.
- **Newly Constructed** Road and Access to Available Lots

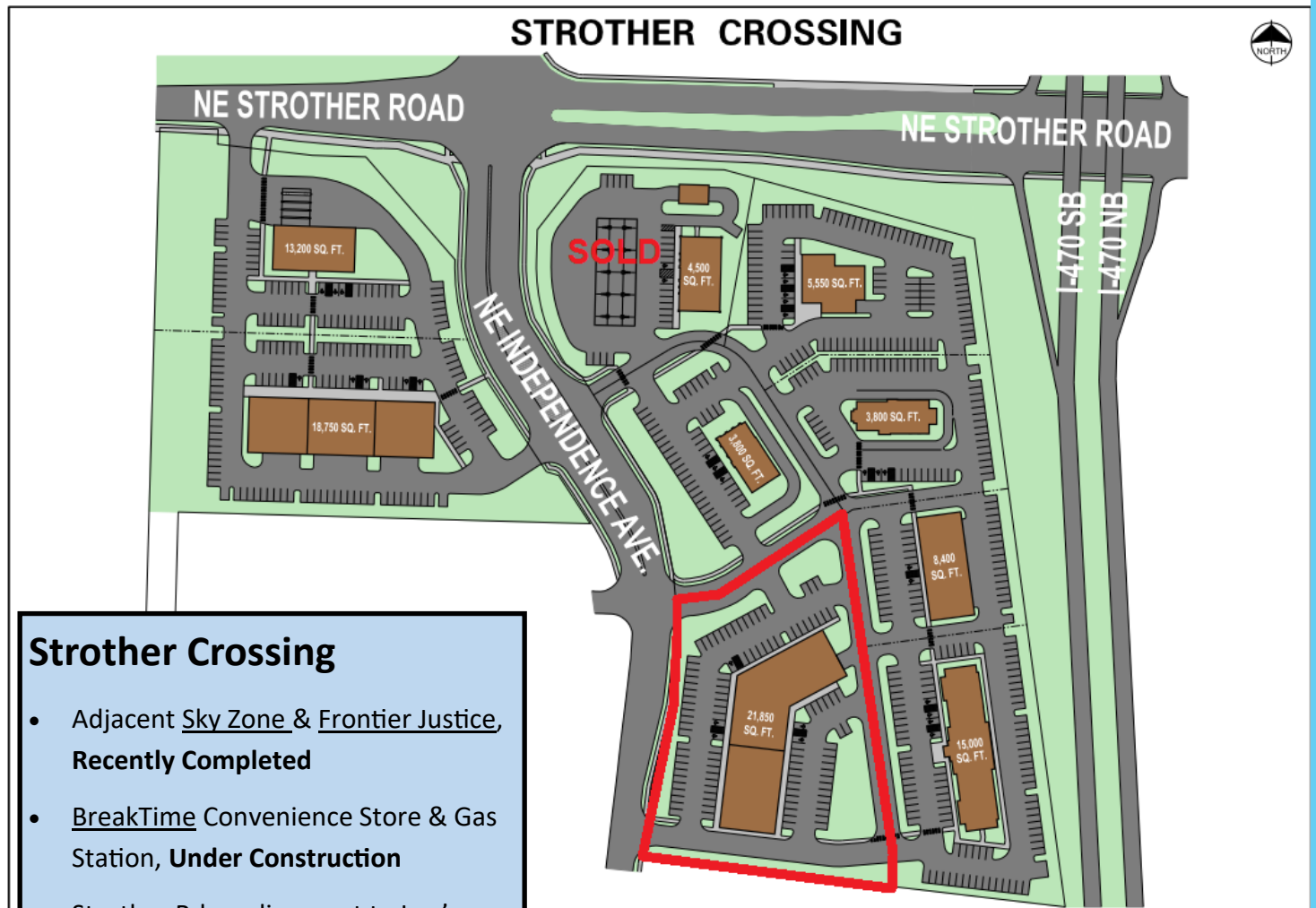


Wilson Burchfield | SilverTree Realty

Cell 573.356.6412 | Office 573.875.5151 |

Email [wburchfield@silvertreeco.com](mailto:wburchfield@silvertreeco.com)

**Available**



### Strother Crossing

- Adjacent Sky Zone & Frontier Justice, Recently Completed
- BreakTime Convenience Store & Gas Station, **Under Construction**
- Strother Rd re-alignment to Lee's Summit Rd, **Recently Completed**
- I-470 Visibility, with convenient access to I-70, AADT: 77,200+
- Population: 95,000+, Median Income 76K

Wilson Burchfield | SilverTree Realty

Cell 573.356.6412 | Office 573.875.5151 |

Email [wburchfield@silvertreeco.com](mailto:wburchfield@silvertreeco.com)