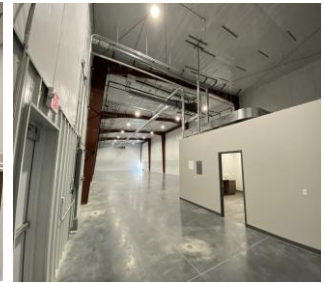


FOR LEASE

# STADIUM COMMERCIAL PARK [BUILDING #1]

2109 COTTLE DRIVE STE 101  
COLUMBIA, MO 65202



## COMMERCIAL FLEX SPACE

INDUSTRIAL | RETAIL | OFFICE

- **AVAILABLE:** November 2025
- **LOCATION:** 2109 Cottle Drive Ste 109, Columbia, MO 65202
- **BUILDING SIZE:** 7,425 SF
- **ZONING:** Industrial, Retail, Office
- **PROPERTY HIGHLIGHTS:**
  - Dock & Drive Door Access.
  - 20' Clear Height.
  - Convenient Access to I-70 & Stadium Blvd.
  - Adjacent to L A Nickell Golf Course & Break Time.
- **LEASE RATE:** \$6,800/month
- **LEASE TYPE:** NNN

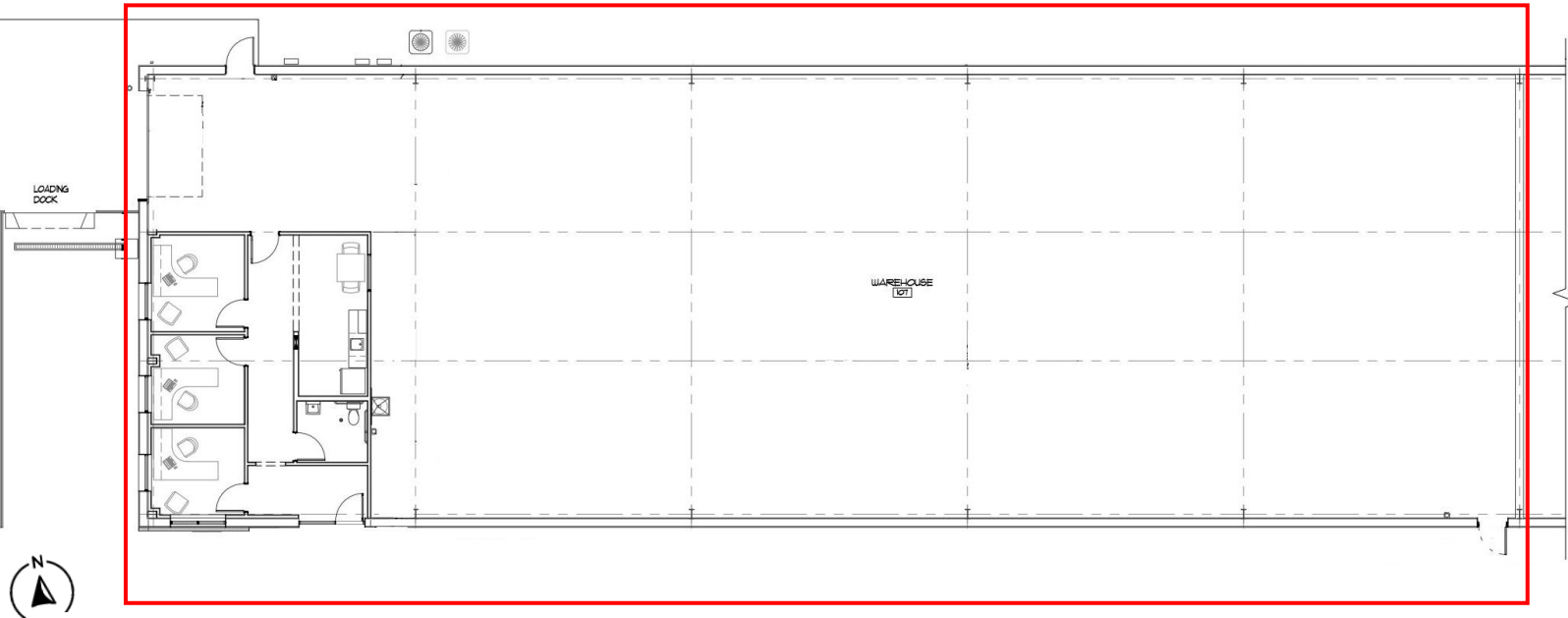


**573.875.5151**  
broker@silvertreeco.com  
[www.silvertreerealtyco.com](http://www.silvertreerealtyco.com)



# FLOOR PLAN

---



---

2109 Cottle Dr Ste 101, Columbia, MO 65202  
7,425 SF