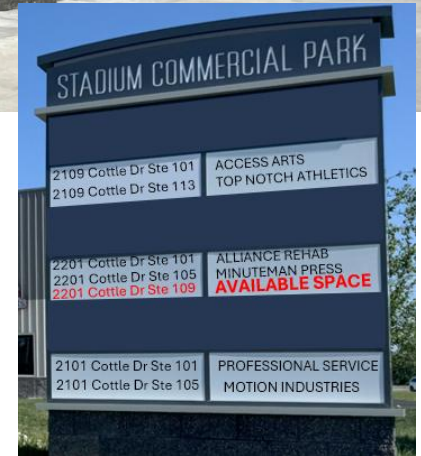


FOR LEASE

# STADIUM COMMERCIAL PARK [BUILDING #2]

2201 COTTLE DRIVE STE 109  
COLUMBIA, MO 65202



STADIUM COMMERCIAL PARK	
2109 Cottle Dr Ste 101	ACCESS ARTS
2109 Cottle Dr Ste 113	TOP NOTCH ATHLETICS
2281 Cottle Dr Ste 101	ALLIANCE REHAB
2201 Cottle Dr Ste 105	MINUTEMAN PRESS
2201 Cottle Dr Ste 109	<b>AVAILABLE SPACE</b>
2101 Cottle Dr Ste 101	PROFESSIONAL SERVICE
2101 Cottle Dr Ste 105	MOTION INDUSTRIES

## COMMERCIAL FLEX SPACE

### INDUSTRIAL | RETAIL | OFFICE

- **AVAILABLE:** June 2025
- **LOCATION:** 2201 Cottle Drive Ste 109, Columbia, MO 65202
- **BUILDING SIZE:** 3,353 SF
- **ZONING:** Industrial, Retail, Office
- **PROPERTY HIGHLIGHTS:**
  - Dock & Drive Door Access.
  - 20' Clear Height.
  - Convenient Access to I-70 & Stadium Blvd.
  - Adjacent to L A Nickell Golf Course & Break Time.
- **LEASE RATE:** \$3,073/month
- **LEASE TYPE:** NNN



**573.875.5151**

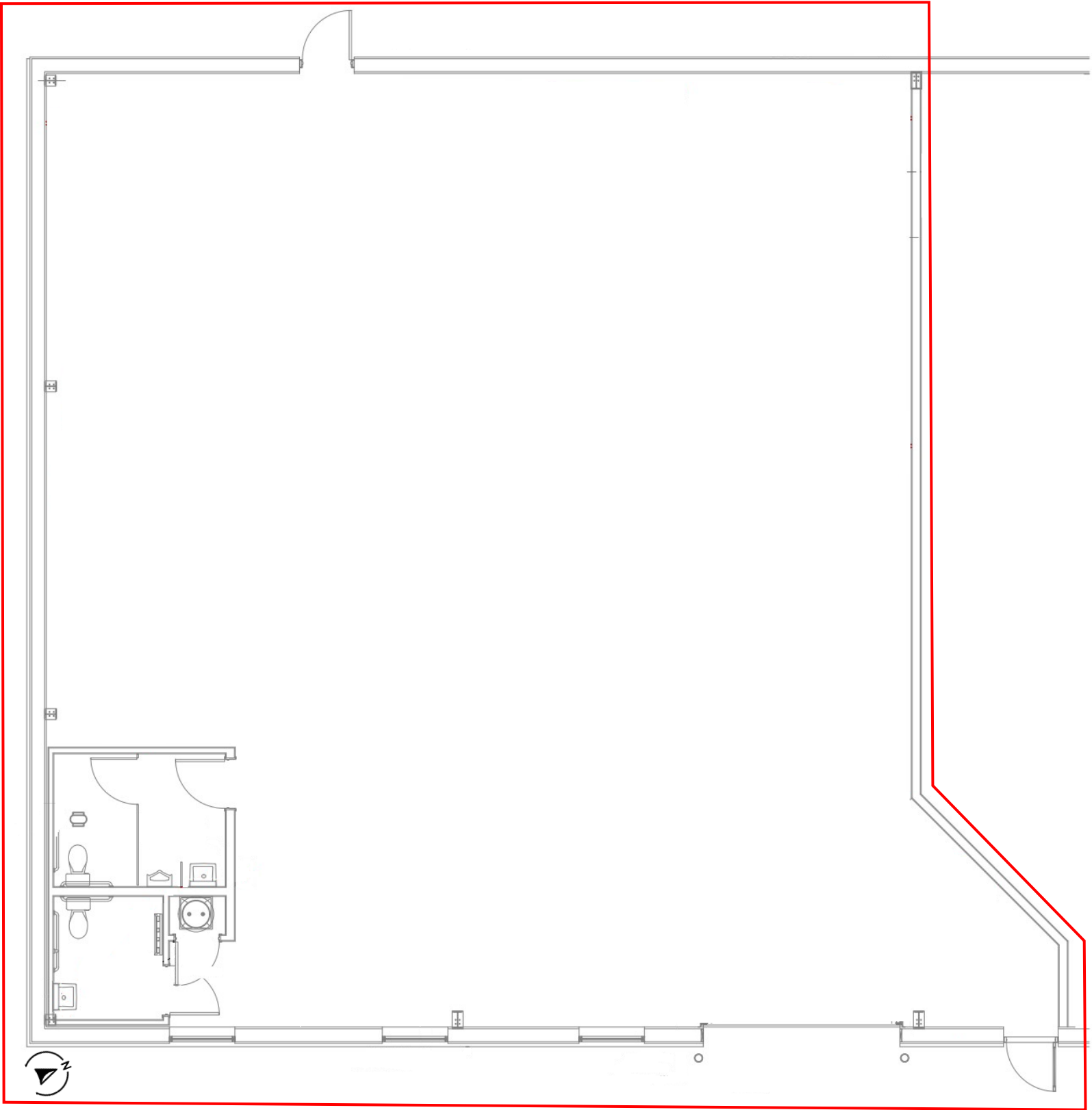
broker@silvertreeco.com

www.silvertreerealtyco.com



**SilverTree**  
REALTY

# FLOOR PLAN



2201 Cottle Dr Ste 109, Columbia, MO 65202  
3,353 SF

**573.875.5151**

[broker@silvertreeco.com](mailto:broker@silvertreeco.com)

[www.silvertreerealtyco.com](http://www.silvertreerealtyco.com)



**SilverTree**  
REALTY